

1

2

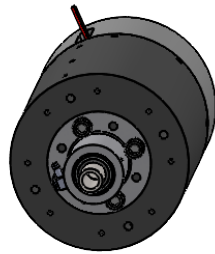
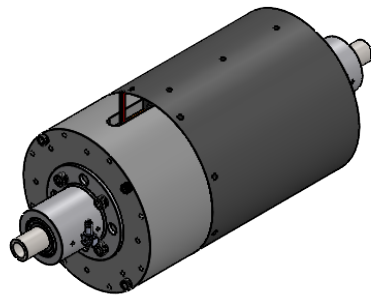
3

4

5

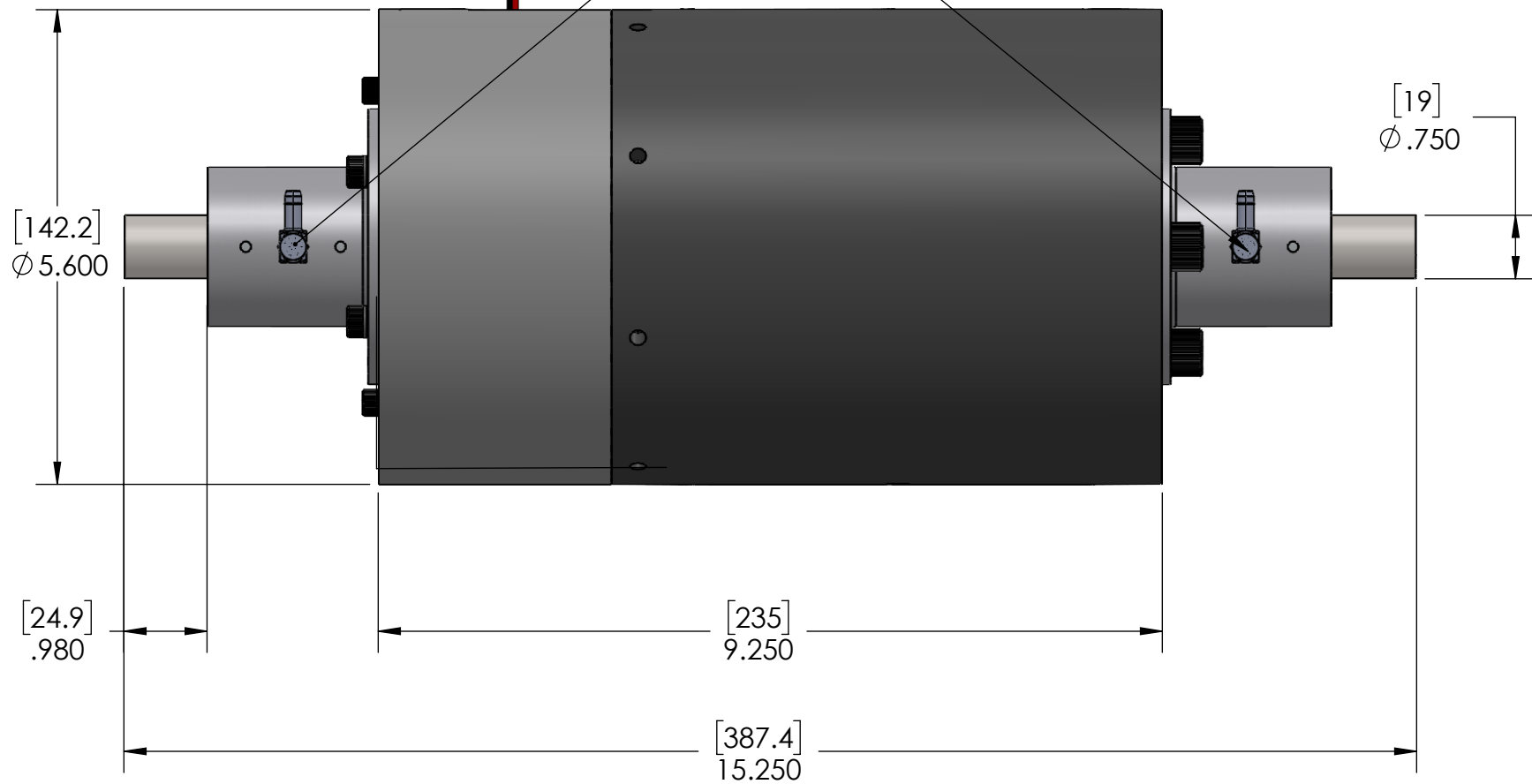
REVISION TABLE

REV	ECN#	DESCRIPTION	REV BY	APPROVED	DATE
---	---	Original Drawing	JRM	MPW	10-27-22



Power Leads AWG #22 or larger
Red and Black, 18 inches long or greater

2X Air Fitting



H2W Technologies, Inc.
Santa Clarita, CA 91350 USA
Tel: (661) 291-1620
www.h2wtech.com

These drawings and specifications are the property of H2W Technologies, Inc. They are issued in confidence and shall not be reproduced, copied, or used without written permission from H2W Technologies, Inc.

UNLESS SPECIFIED OTHERWISE:
All dimensions are in inches
Standard Tolerances are as follows
.XX $\pm .005$ ANGLES $\pm 1^\circ$
.XX $\pm .010$ FILLETS .010
.X $\pm .020$ CORNERS .010
Remove All Burrs and Sharp Edges

**RELEASED FOR
MANUFACTURING**
[Signature]
11-11-22

MATERIAL
FINISH

TITLE

Non-Commutated DC Linear Actuator
Model # NCC12-60-1000-2AB

DWG # **30-1600**
REV **----**
DATE **10-27-22** SHEET **1 of 3**

1

2

3

4

5

A

A

B

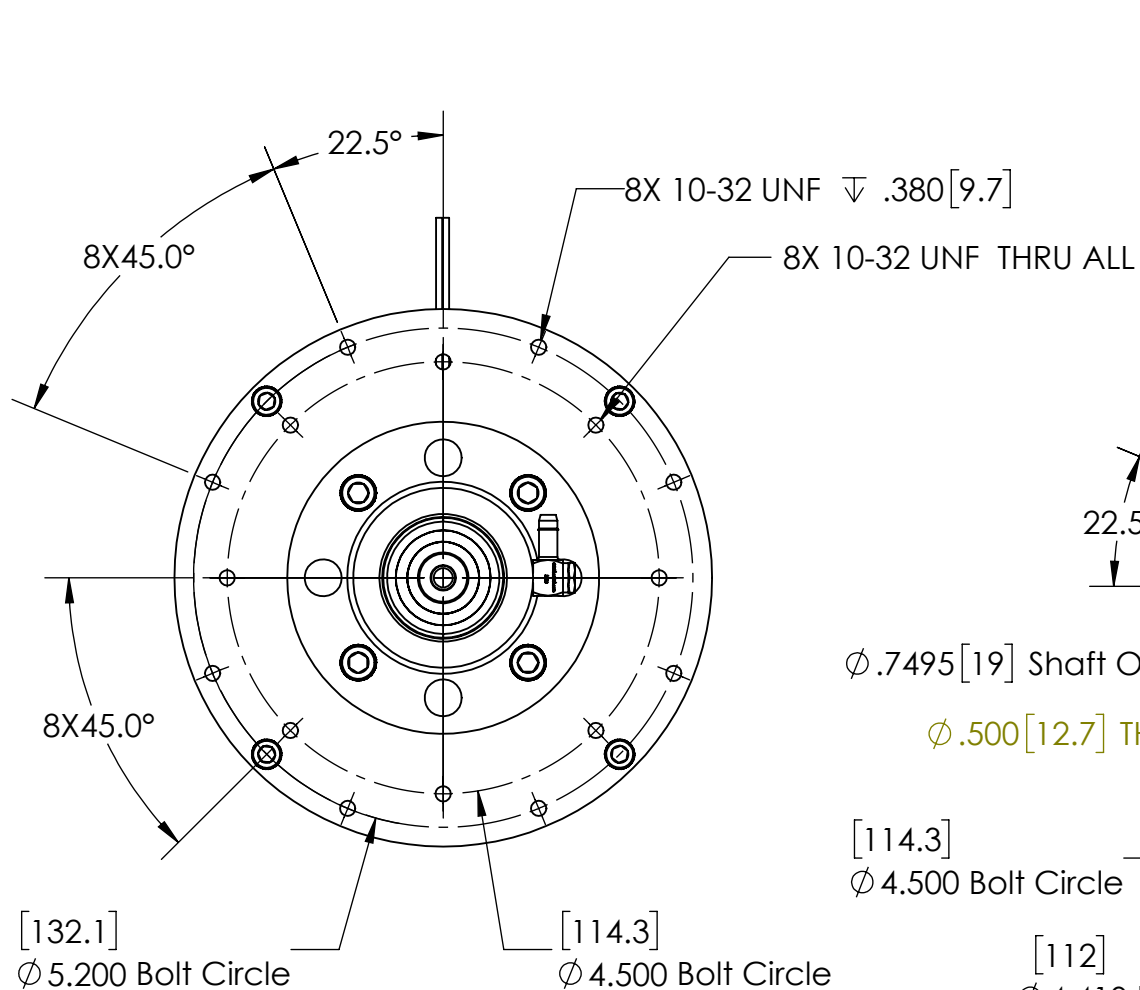
B

C

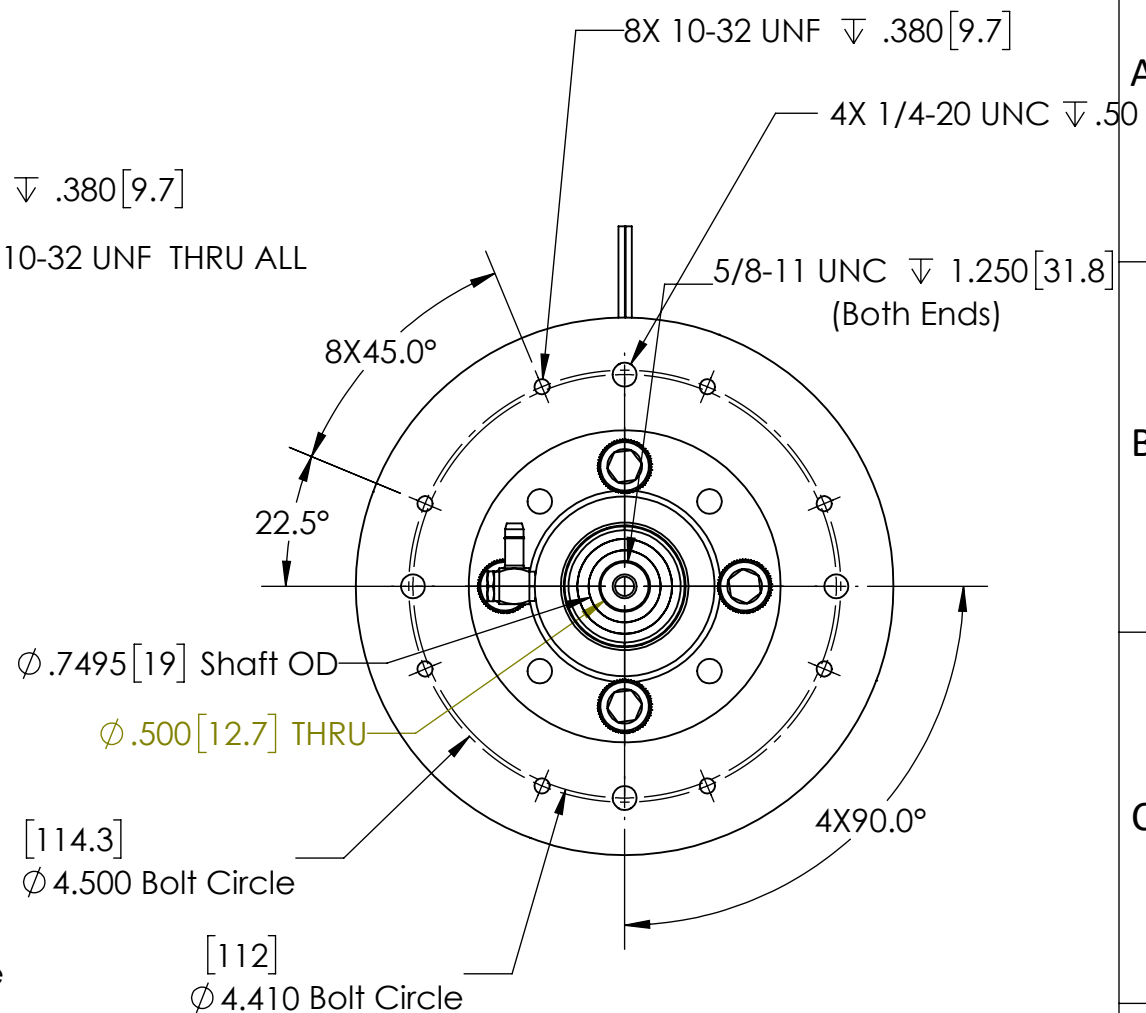
C

D

D



FRONT/LEAD SIDE



BACK SIDE



H2W Technologies, Inc.
Santa Clarita, CA 91350 USA
Tel: (661) 291-1620
www.h2wtech.com

These drawings and specifications are the property of H2W Technologies, Inc. They are issued in confidence and shall not be reproduced, copied, or used without written permission from H2W Technologies, Inc.

UNLESS SPECIFIED OTHERWISE:
All dimensions are in inches
Standard Tolerances are as follows
.XXX ±.005 ANGLES ±1°
.XX ±.010 FILLETS .010
.X ±.020 CORNERS .010
Remove All Burrs and Sharp Edges

MATERIAL

FINISH

TITLE

Non-Commutated DC Linear Actuator
Model # NCC12-60-1000-2AB

DWG #

30-1600

REV

DATE

10-27-22

SHEET

2 of 3

1

2

3

4

5

A

A

B

B

C

C

D

D

NON-COMM ACTUATOR SPECIFICATIONS

Motor P/N	NCC12-60-1000-2AB	
Device Type	Moving Coil	
Stroke	1.20 in	30.5 mm
Radial Clearance	0.025 in	0.64 mm
Bearing Type	Air Bushing	
Moving Mass	6.1 lbs	2.8 kg
Total Mass	45.2 lbs	20.5 kg
Resistance @ 20C	0.7 ohms \pm 0.1 ohms	
Inductance @ 20C	0.6 mH \pm 0.2 mH	
Electrical Time Constant	0.9 msec	
Motor Constant	11.8 lbs/sqrt(watt)	52.5 N/sqrt(watt)
Force Constant	9.9 lbs/amp	43.9 N/amp
Back EMF	1.1 V/ips	43.9 V/m/sec
Force @ 100% Duty	100 lbs	454 N
Power @ 100% Duty	72 watts	
Current @ 100% Duty	10 amps	
Force @ 10% Duty	300 lbs	1362 N
Power @ 10% Duty	650 watts	
Current @ 10% Duty	30 amps	



H2W Technologies, Inc.
 Santa Clarita, CA 91350 USA
 Tel: (661) 291-1620
www.h2wtech.com

These drawings and specifications are the property of H2W Technologies, Inc. They are issued in confidence and shall not be reproduced, copied, or used without written permission from H2W Technologies, Inc.

UNLESS SPECIFIED OTHERWISE:
 All dimensions are in inches
 Standard Tolerances are as follows
 .XXX \pm .005 ANGLES \pm 1°
 .XX \pm .010 FILLETS .010
 .X \pm .020 CORNERS .010
 Remove All Burrs and Sharp Edges

MATERIAL

FINISH

TITLE

Non-Commutated DC Linear Actuator
 Model # NCC12-60-1000-2AB

DWG #

30-1600

REV

DATE

1-1-16

SHEET

3 of 3